

# Expectations



## SPANISH

Use it! With your teacher, classmates, etc. As much as you can!



## KEYS TO SUCCESS?

Participate, try, risk! Review nightly!  
Earn **participation points!**



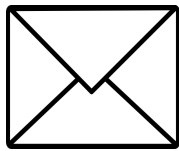
## ON TIME

Be ready to go when class starts!



## HOMEWORK?

Due the next day! Should be on your desk at the **START** of class. **NO** late work accepted.



## QUESTION?

Send me an email:

[sarah.ross@newbremenschools.org](mailto:sarah.ross@newbremenschools.org)

**OR**

**@NHSRoss**



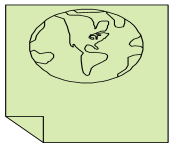
## NEED TO REVIEW?

Studyspanish.com

GOOGLE CLASSROOM RESOURCES

Conjugemos.com

Quizlet



Check my website for extra credit opportunities. They are available **WEEKLY!**



## ABSENT?

Check **GOOGLE CLASSROOM**

Check with a classmate **OR** check with me: (email-or- before/after school)



## MY PHONE/Chromebook

Yes, you can use it. **ONLY ON**

**APPROVED DAYS.** As a dictionary, to record, etc. Educational use only!

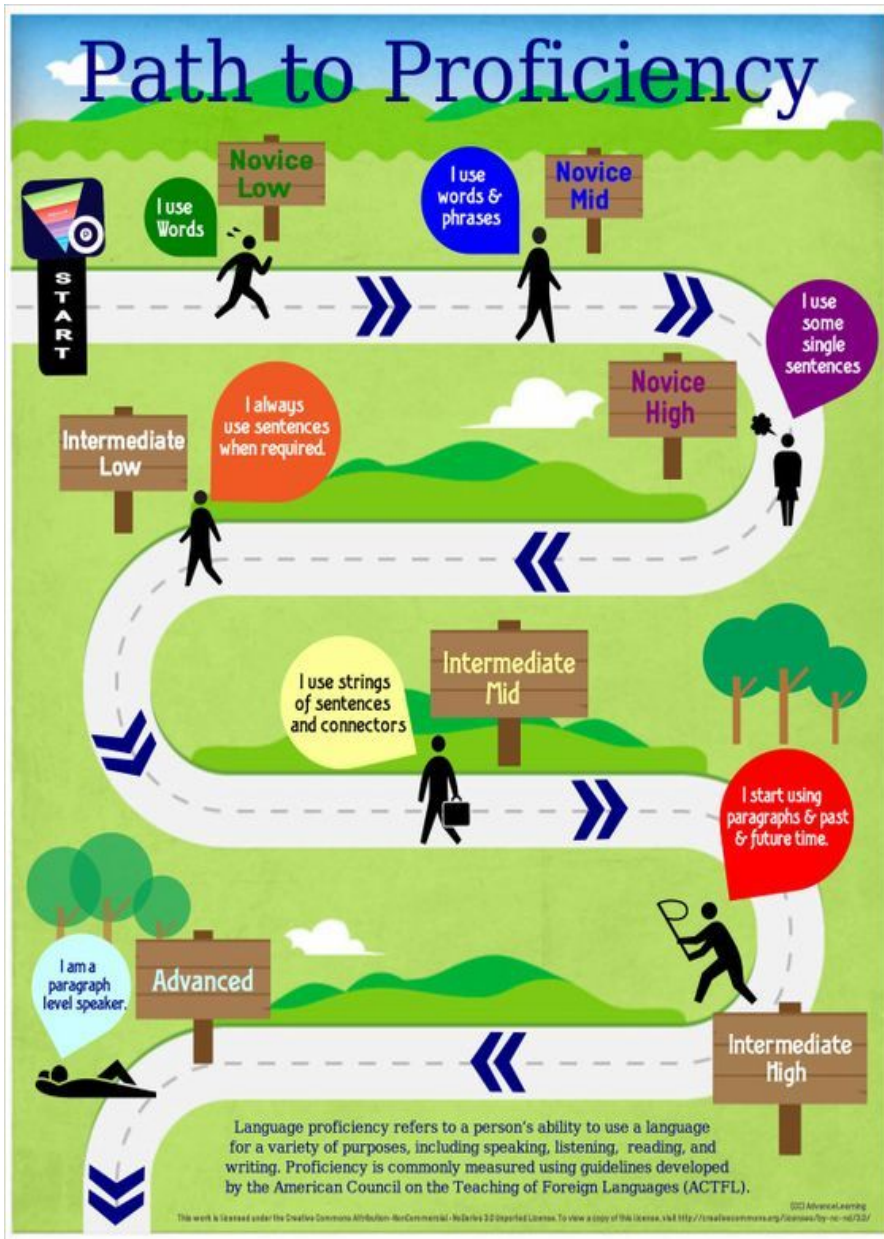
**APPS :**

Word Reference

**Website:** [SraRoss.weebly.com](http://SraRoss.weebly.com)

# La Clase de Español

# Señora Ross



## Grade:

Your grade will be based on categories: Participation, Performance Assessments, Proficiency Assessments, Interpretive Listening, Interpretive Reading, Interpersonal Communication, Presentational Writing, and Presentational Speaking. You will be evaluated using Portfolios, based on the Ohio Department of Education's Model Curriculum for World Languages and the ACTFL Levels of Proficiency.

**What to expect:** We will be doing reading, writing and speaking exercises, but also TPR and TPRS. This means I will give you a command, and you will physically do something. After we learn several gestures we will then read stories using vocabulary words and we will also make up stories as a class or group. This is a language class, so you will be expected to speak, write, read, and listen in Spanish.

**Speaking in Spanish:** You will be given points for speaking in Spanish every nine weeks. When you speak in English during the Spanish times, points will be deducted from your score. You can answer with *no comprendo*, but if that is all you answer with points will be deducted from your grade.

## Supplies Needed

- Participation!!
- Paper, Pen, Pencil
- PASSWORDS FOR APPS AND ACCOUNTS
- Dividers/Folders (5)
- A Good Attitude !
- Duolingo Account

## **Spanish I Units of Study: Proficiency Level: Novice Low-Novice Mid.**

- Greetings and Time Management Across Culture
- Education
- Friends and Leisure Time
- Cultural Heritage- *Selena Film Study*
- Propaganda, Guernica, and the Spanish Civil War- *Agentes Secretos Novel*
- Global Fashion Industry
- Sustainability and Food Production

## **Spanish II Units of Study: Proficiency Level: Novice Mid-Novice High**

- Day of the Dead-Tumba Novel, *Book of Life Film Study*
- Immigration-Esperanza Novel, *Misma Luna Film Study*
- Travel
- Discrimination and Perseverance- Felipe Alou Novel
- Family Dynamics- *Sweet 15 Film Study*

## **Spanish III Units of Study: Proficiency Level: Novice High-Intermediate Low**

- El Camino- Living your best life. *The Way Film*
- Legends and Identity- La Llorona Novel *Coco Film*
- Agua es Vida- *Tambien La Lluvia Film Study*
- Spanish Civil War- Hija del Sastre Novel-*Lengua de Mariposa Film Study*

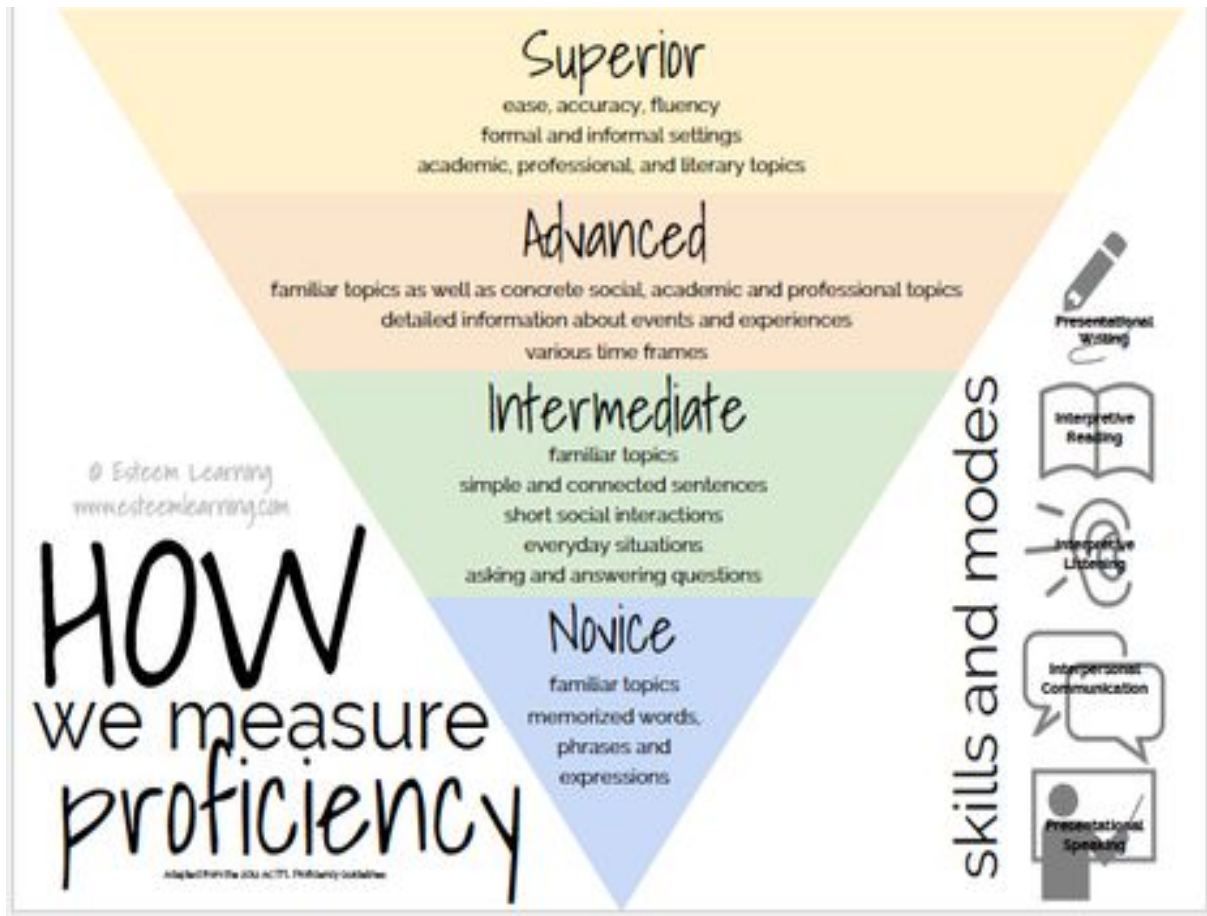
## **Spanish IV Units of Study: Proficiency Level: Intermediate Low-High**

- Mara Salvatrucha Book Study, *World's Most Dangerous Gang Film Study*
- Arte y Frida Kahlo, Novel
- Mar de Plástico
- Instantes- Sense of Self
- Language Connections in the Workplace

**Extra credit work:** This consists of extra activities that you do outside of class to practice the language. You have several options to choose from each nine weeks. The main source of extra credit will be a current event article worth 3 pts. These will be accepted on Fridays. You will find an article IN SPANISH and circle all cognates (Level 1 only does this), **and** summarize the article in your own words in English.

### **Absent/late work:**

If you are absent, you are responsible for making up your work. You will have 1 day for every day you are absent to turn in absent work. If work is not turned in after 1 day, you will receive a zero. Late work will not be accepted, and you will receive a zero for missing homework. Your homework should be turned in with the rest of the class, if not, you will not receive points. Partial points will be given for partial work completed. Projects turned in late will receive a 10% grade deduction per day that it is late.



Notes:

By signing I am agreeing that I have read and understand what is expected of me in Spanish class, as well as what units of study we will cover. I also understand that novels and film studies are a part of this curriculum. In addition, I agree to participate in culinary studies and tastings, keeping in mind food safety, allergies, and cleanliness.

Student Signature: \_\_\_\_\_

Parent Signature: \_\_\_\_\_ Date \_\_\_\_\_